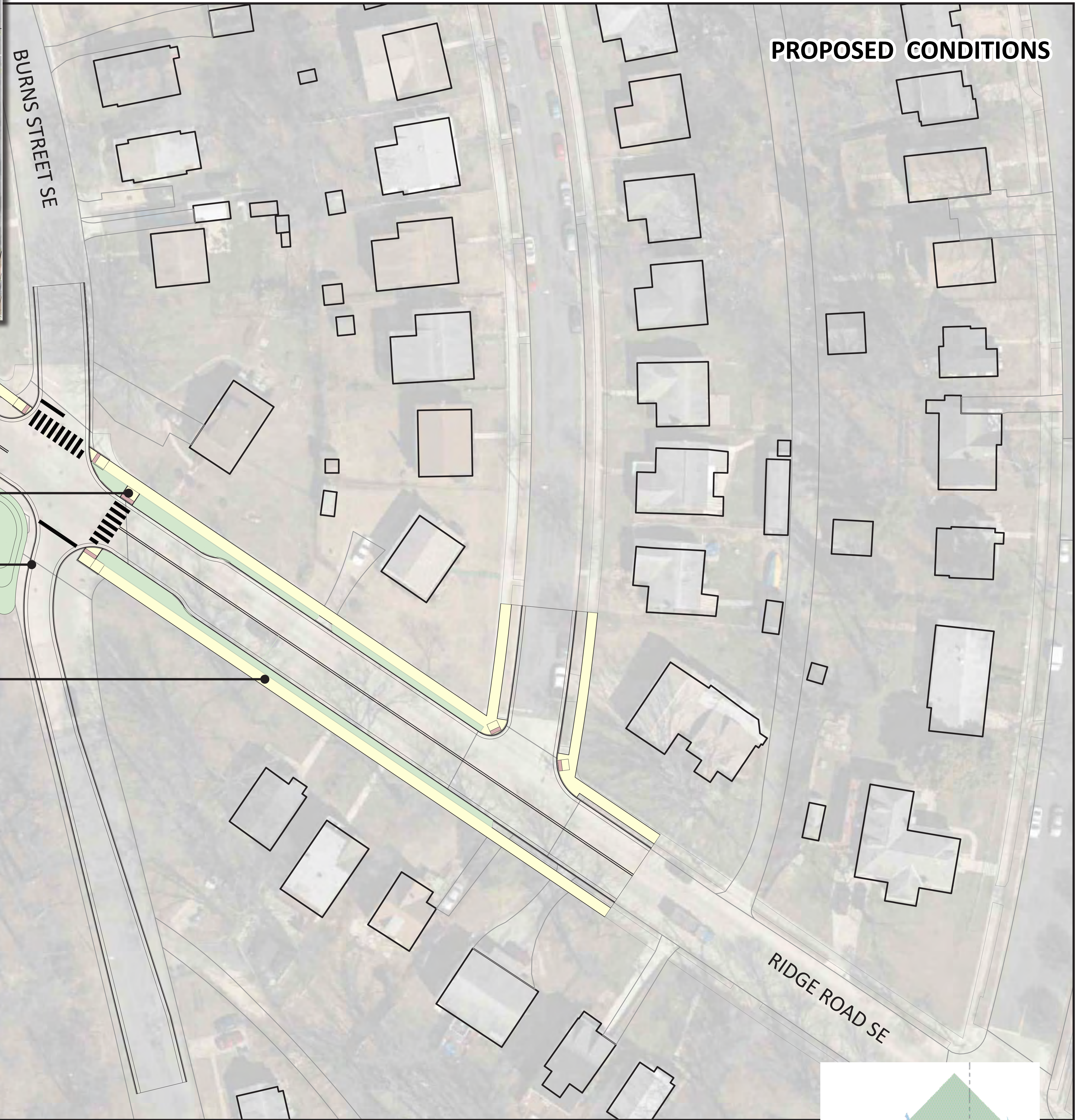




EXISTING CONDITIONS



PROPOSED CONDITIONS

- Bump-outs narrow roadway and reduce vehicle speed
- Proposed bioretention area
- Improved pedestrian crossing
- Remove excess impervious surface
- Reduce intersection skew
- New sidewalk connection

RIDGE ROAD AND BURNS STREET

